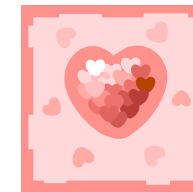




February 2010



Sun	Mon	Tue	Wed	Thu	Fri	Sat
	1 1st day of the 2nd Semester	2 Groundhog Day	3	4 Parent/Teacher Con- ferences 1/2 day (11:10 dis- missal)	5 Popcorn Sale (50 cents each) "Renewable Energy" Assembly @ 9 AM	6
Haiti Penny Drive February 1—12th (Donation will be sent to "Doctors Without Borders")						
7	8 Chess Club 3-4 PM	9 Wyandotte Big Boy Fundraiser	10 TAP Meeting @ 3 PM 100th Day of School! Taft Shirt Day	11	12 1/2 day (11:10 dismissal)	13
14 Happy Valen- tine's Day! 	15 President's Day (No School)	16	17	18 Market Day or- ders due	19 Nacho Sale \$2.00 each	20
21	22 Chess Club 3-4 PM	23 Taft Savings Day	24 PBS Reward—PJ, Movie & Popcorn Party Market day pick- up	25	26	27
28	<p>Read with your child each day. It's the most important 20 minutes you can spend with your child!</p>					